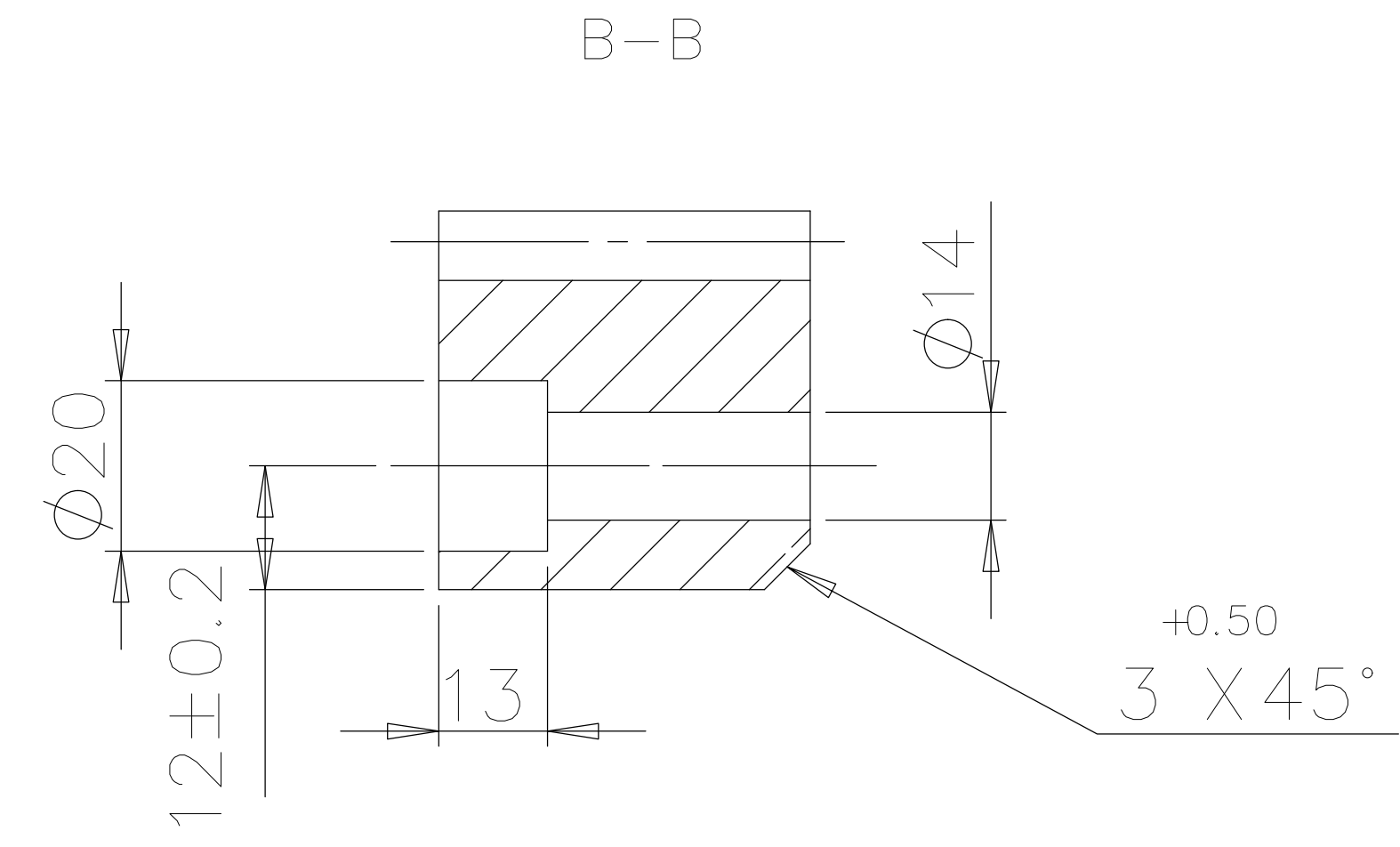
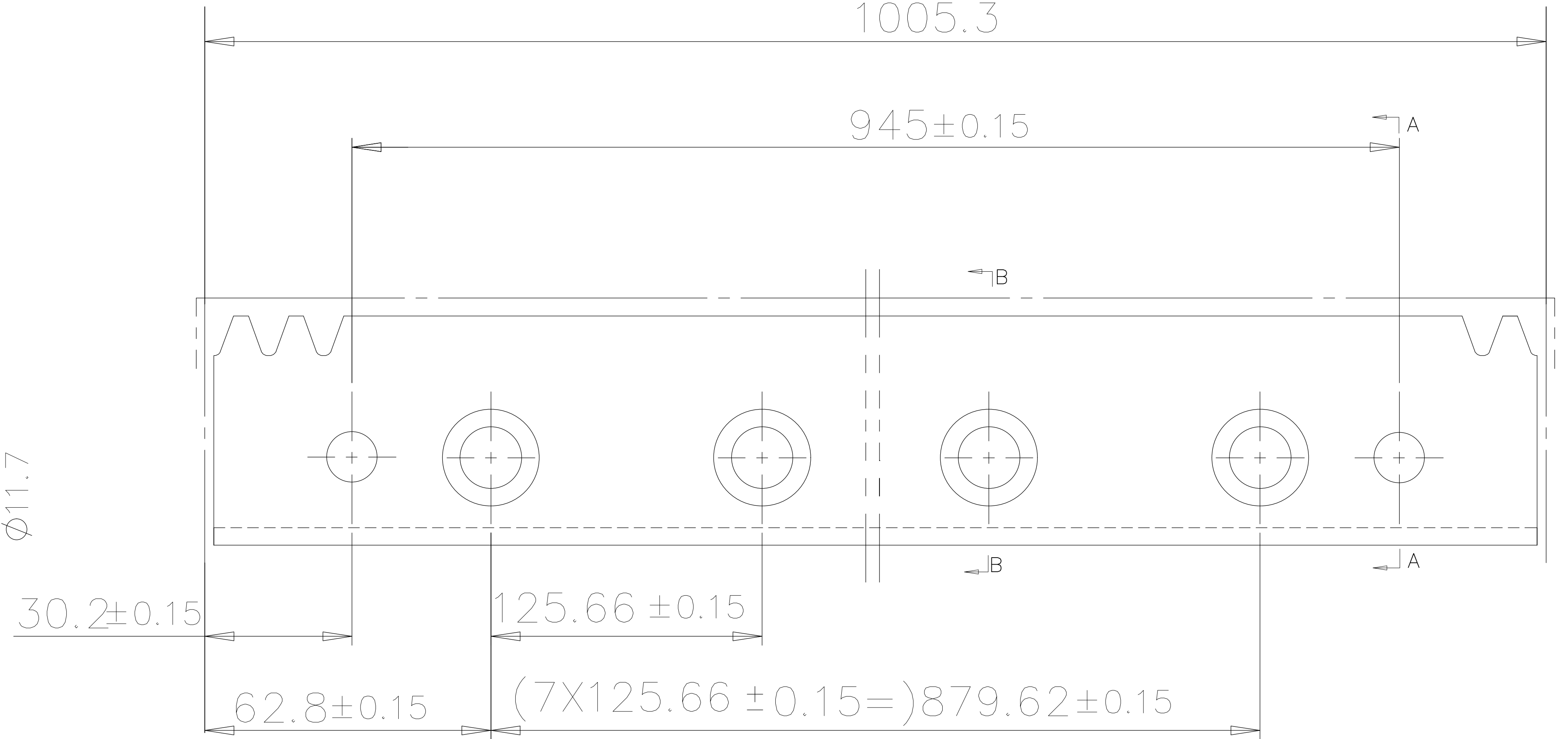
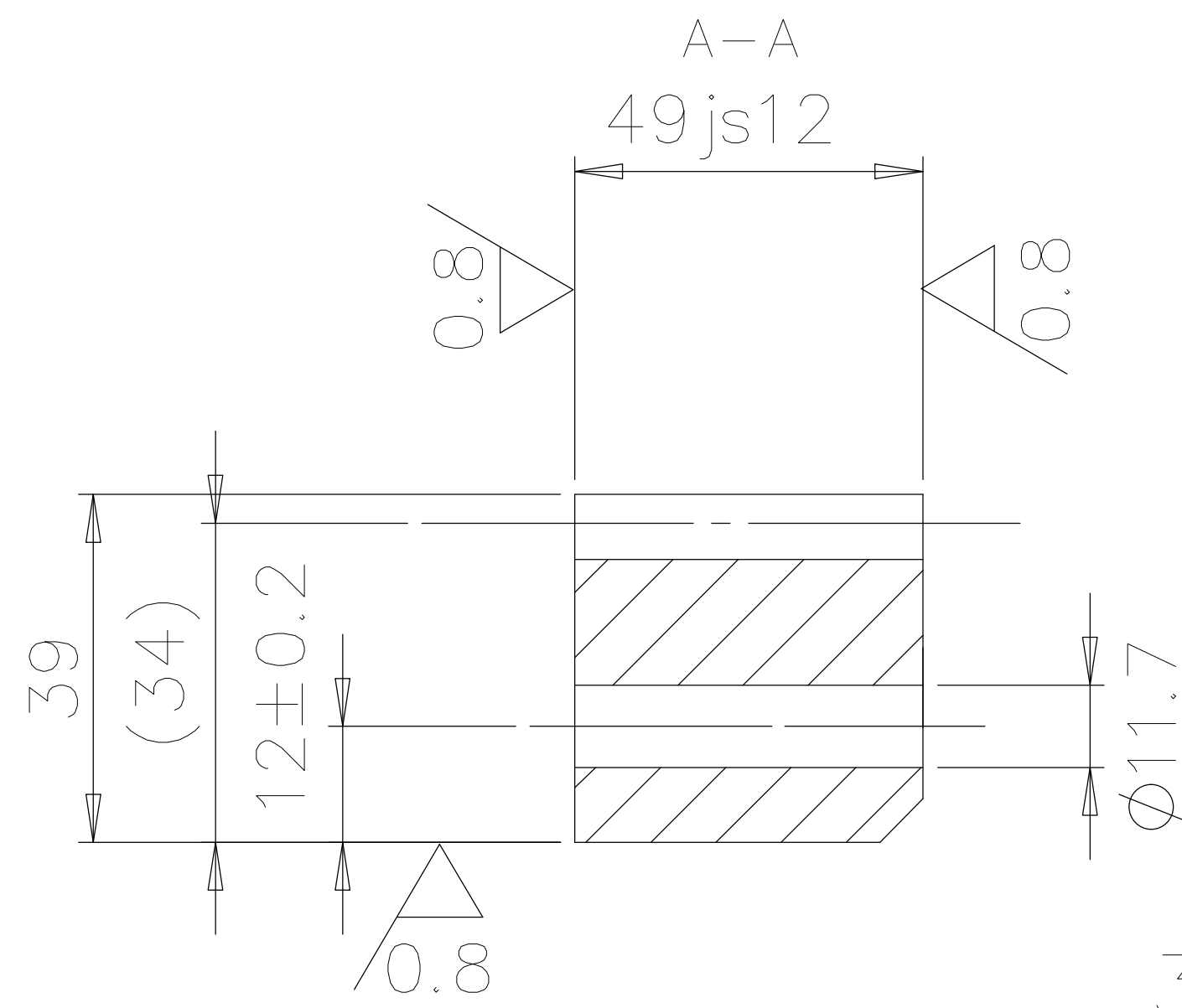


Rack Data			
模数	module	m	5
压力角	pressure angle	$\alpha$	20°
齿数	number of teeth	Z	64
齿顶修缘	topping		yes
螺旋角	helical angle	$\beta$	-
旋向	hand of helix		-
齿顶减薄	tip alteration	km	-
精度等级	accuracy grade		DIN 9
齿距累计偏差	cumulative pitch dev	FpL	0.05/300
齿距总偏差	GT pitch dev	GT/1000	0.1

技术要求：  
 1、齿部作高频淬火处理，硬度HRC50-55  
 2、去毛刺，棱边倒钝



<b>STR'RONSE</b>		NO.	2005. 401	DRAWN: YAO	DATE:
		MATERIAL:	C45	TITLE: 齿条 Rack	