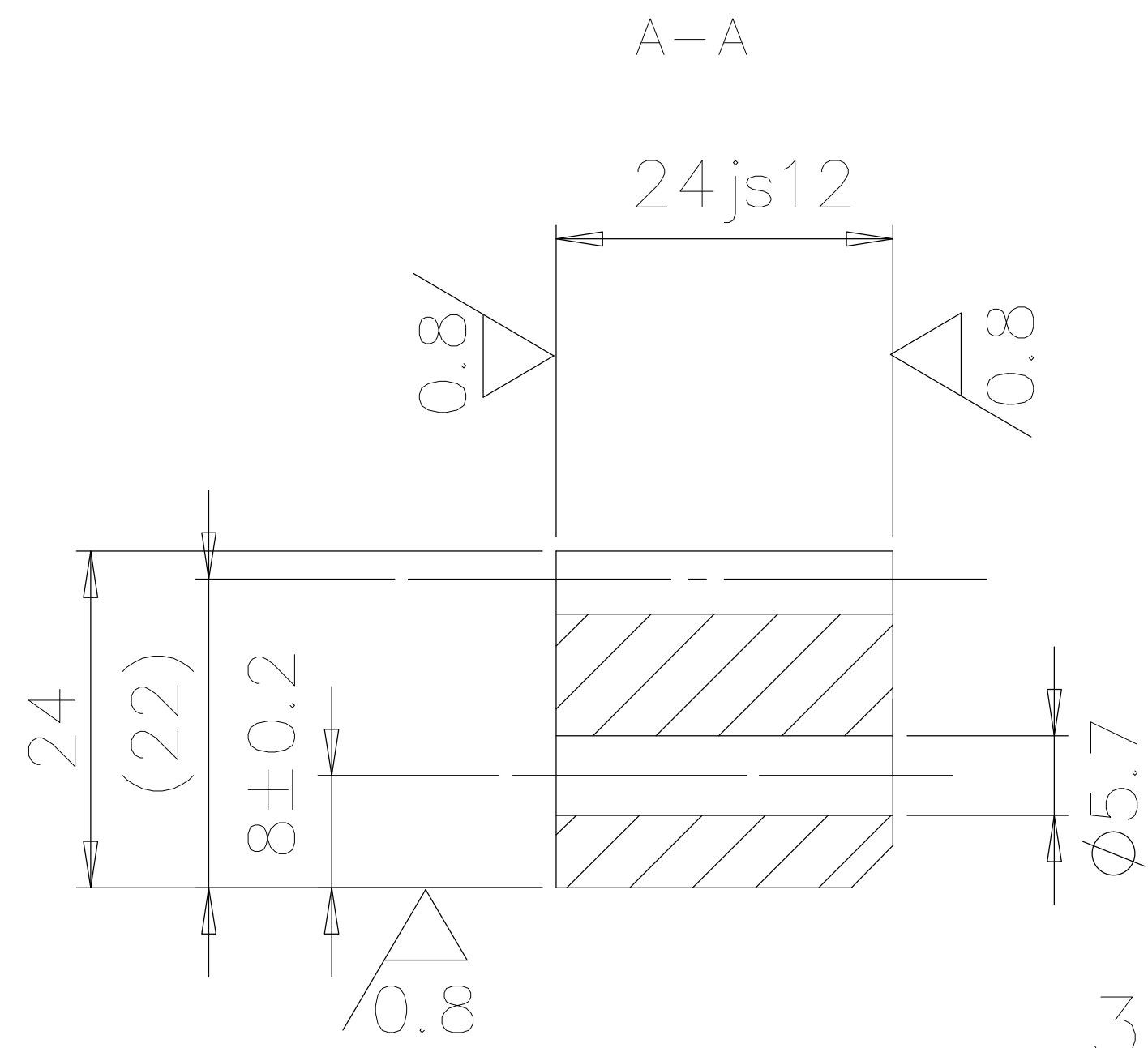
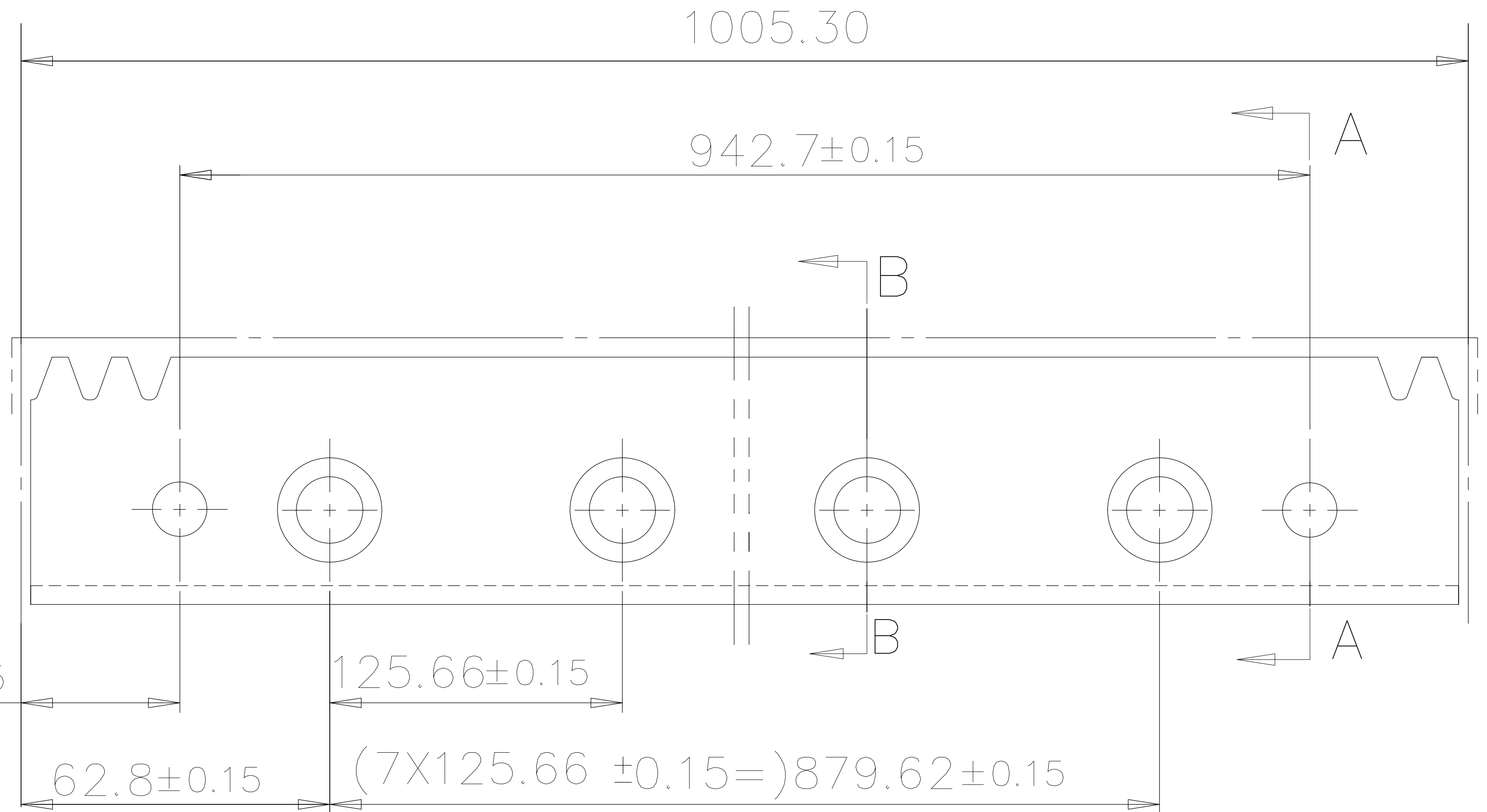


Rack Data			
模数	module	m	2
压力角	pressure angle	$\alpha$	20°
齿数	number of teeth	Z	160
齿顶修缘	topping		yes
螺旋角	helical angle	$\beta$	-
旋向	hand of helix		-
齿顶减薄	tip alteration	km	-
精度等级	accuracy grade		DIN9
齿距累计偏差	cumulative pitch dev	FpL	0.05/300
齿距总偏差	GT pitch dev	GT/1000	0.1

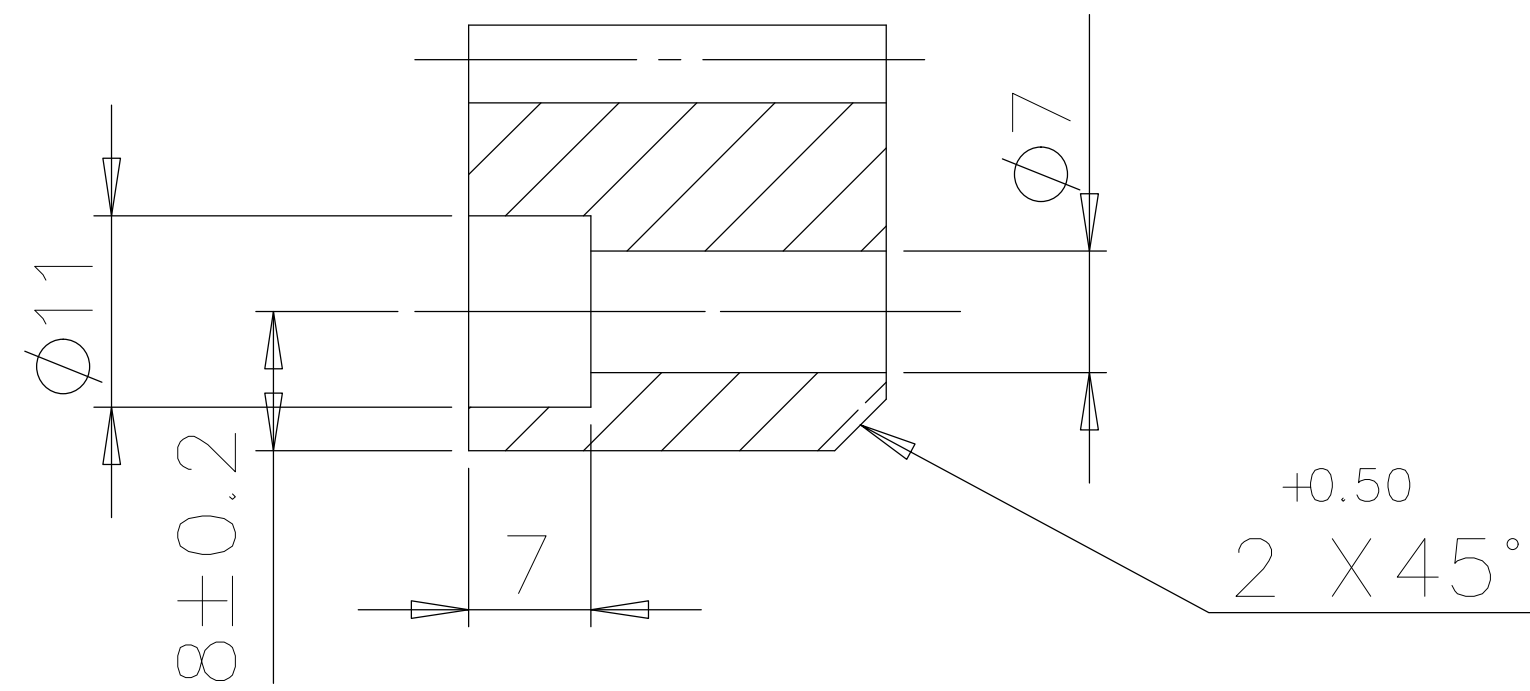
- 技术要求：  
 1、齿部作高频淬火处理，硬度HRC50-55  
 2、去毛刺，棱边倒钝



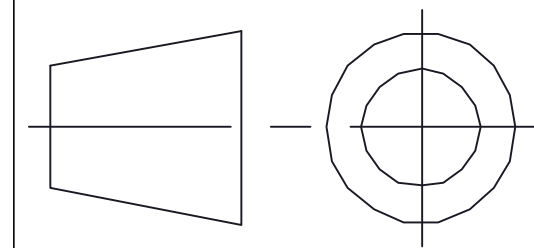
31.3±0.15



B-B



**STR'RONSE**



NO.

2002. 401

DRAWN: YAO

DATE:

MATERIAL:

C45

TITLE: 齿条 Rack