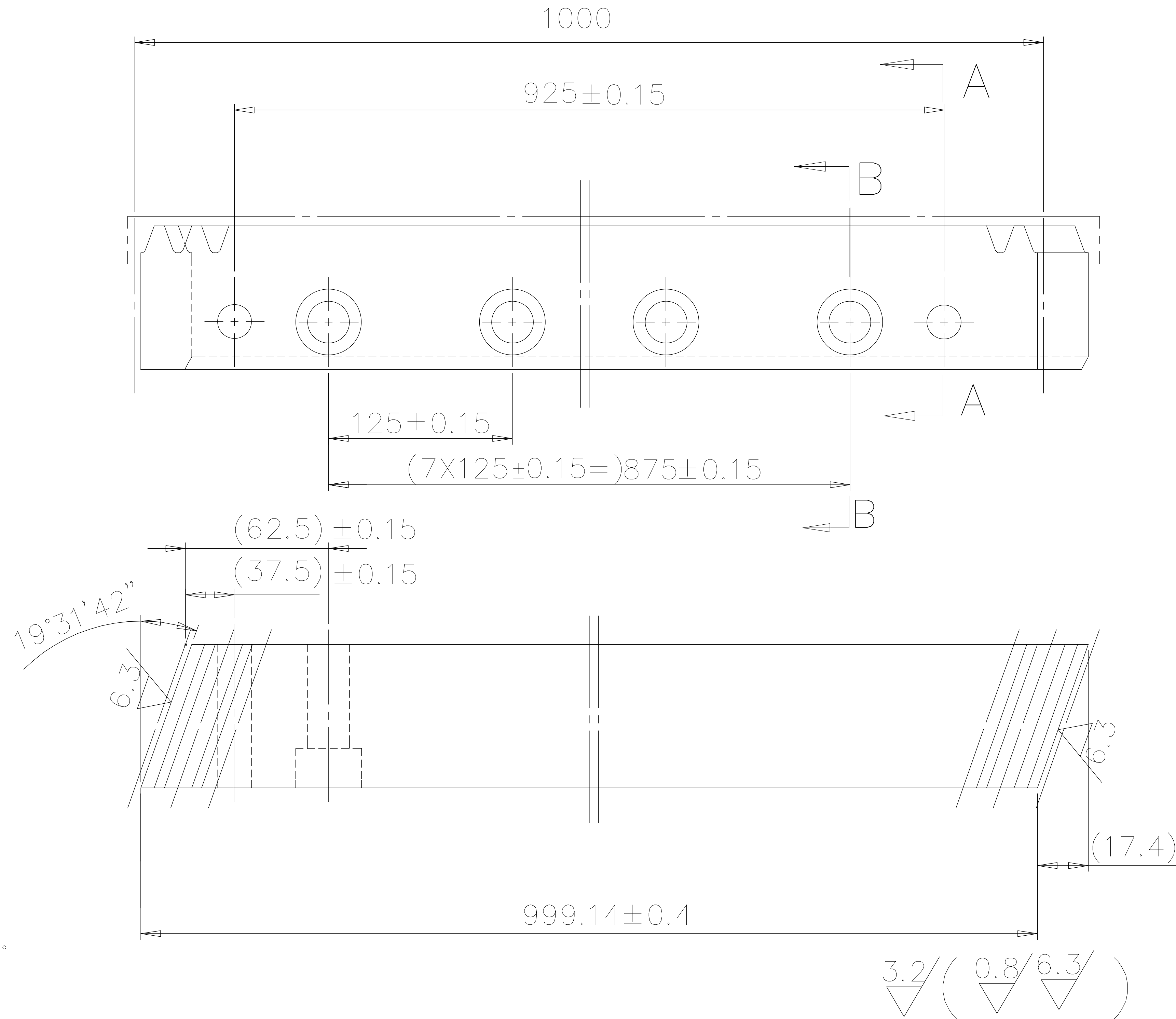
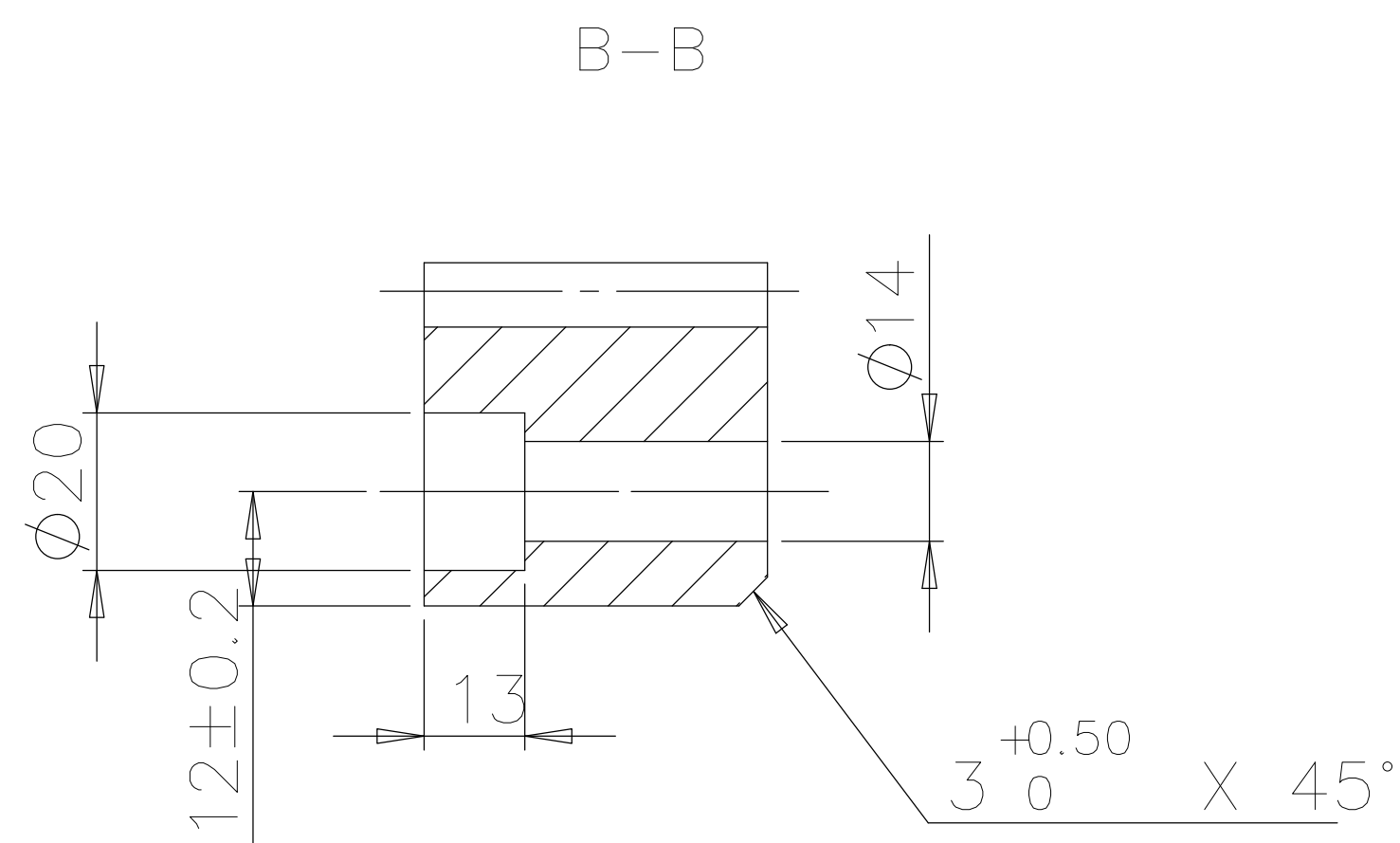
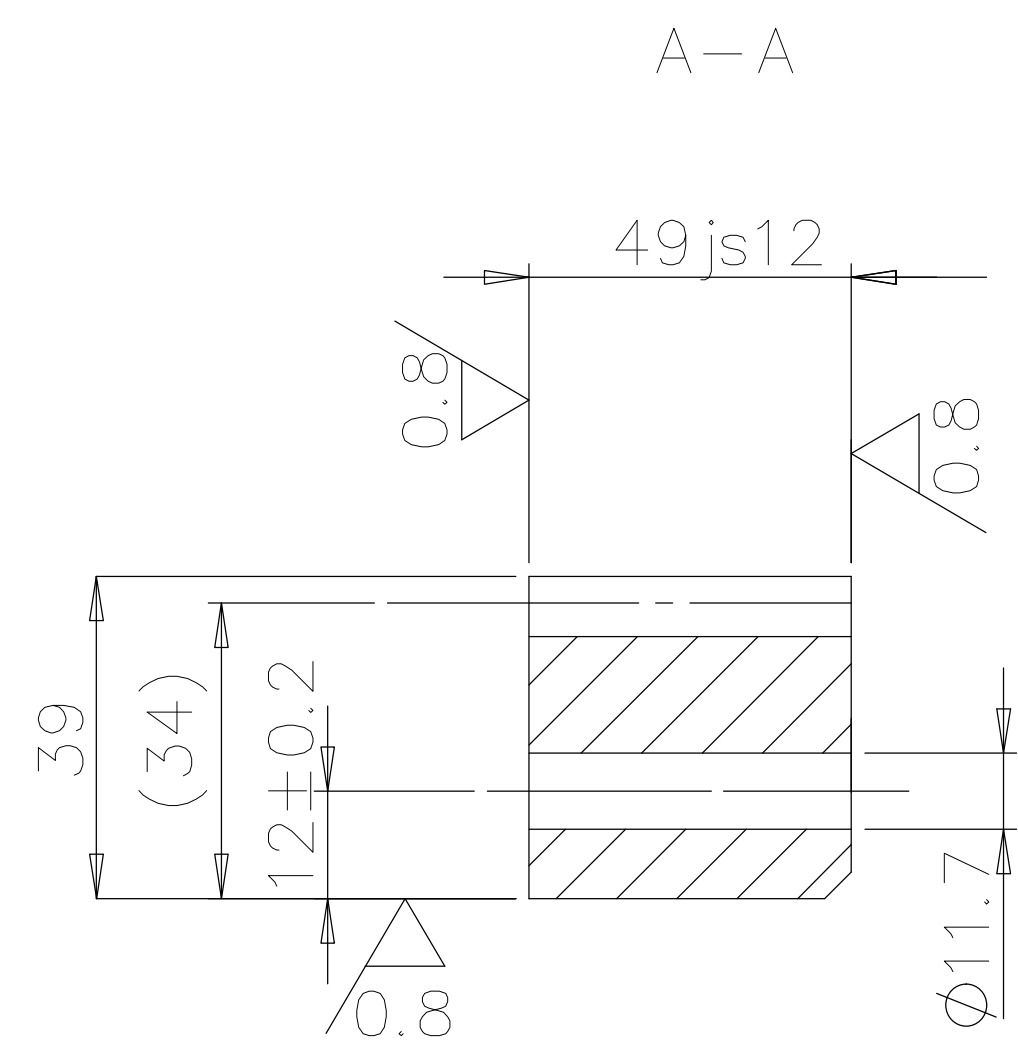
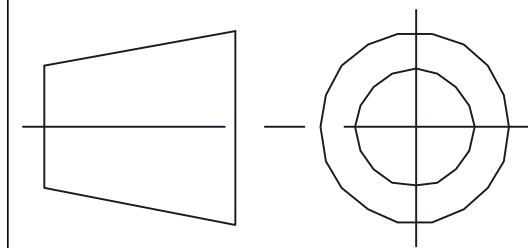


| Rack Data | | | |
|-----------|----------------------|----------|-----------|
| 模数 | module | m | 5.0 |
| 压力角 | pressure angle | α | 20° |
| 齿数 | number of teeth | Z | 60 |
| 齿顶修缘 | topping | | yes |
| 螺旋角 | helical angle | β | 19°31'42" |
| 旋向 | hand of helix | | RH |
| 齿顶减薄 | tip alteration | km | - |
| 精度等级 | accuracy grade | | DIN 8 |
| 齿距累计偏差 | cumulative pitch dev | FpL | 0.04/300 |
| 齿距总偏差 | GT pitch dev | GT/1000 | 0.08 |

技术要求：
 1、调质处理，硬度HRC24-27
 2、去毛刺，棱边倒钝



STR'RONSE



NO.

1905. 301

DRAWN: YAO

DATE:

MATERIAL:

C45

TITLE: 齿条 Rack